

Program conducted under the
auspices of
Bergen County Executive
Dennis McNerney



It is funded by the
County of Bergen
And the
Special Child, Adult Health and
Early Intervention Services
Of the
New Jersey Department of
Health and Senior Services



***Any person who knows
a child who may be eligible for the
program should contact:
(201) 634-2620***

Bergen County
Department of Health Services
Special Child Health Services
327 E. Ridgewood Avenue
Paramus NJ 07652

(201) 634-2620

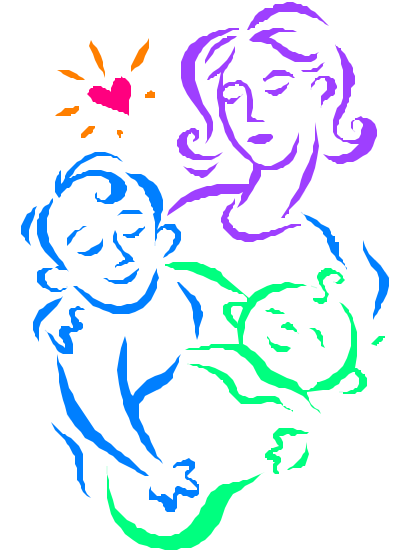
We are here to assist Monday through
Friday from 9 a.m. to 4:30 p.m.

Fax: (201) 599-8947

On-line at: www.bergenhealth.org

Email: Lmatthews@co.bergen.nj.us

Special Child Health Services



Dennis McNerney
Bergen County Executive

BERGEN COUNTY
DEPARTMENT OF HEALTH
SERVICES
CASE MANAGEMENT UNIT

Services for Special Children

If you have a special child, the most important thought in your mind is the child's care, progress and development.

To assure that your child receives the best health care possible, the Bergen County Case Management Unit will work with you to develop a plan of care. A health care professional will assist you in obtaining the services available for your child.



Who is Eligible

Any child, from birth to 21 years of age, who has a birth defect, a serious illness, has difficulty walking, talking, and understanding, or is at risk of developing a handicapping condition is eligible.

Individual Plan Developed

The individual plan describes the child's medical, educational, developmental, social and rehabilitative needs, including:

- ◆ Basic history and medical diagnosis
- ◆ Current needs
- ◆ Measurable objectives to meet these needs
- ◆ Ongoing evaluation of progress

Children who require services from many agencies and children who receive Supplemental Security Income (SSI) benefits are especially in need of case management.

Special priority is given to infants and young children who require many services and long term follow-up.

FURTHER INFORMATION

If you believe your child may be eligible for this program, please phone the Bergen County Department of Health Services, Case management unit at:

(201) 634-2620

THE CASE MANAGEMENT TEAM

The Case Management Team can provide the following:

- ◆ Assessment
- ◆ Coordination of services with other agencies
- ◆ Referrals to the many services available through the community
 - ◆ Child evaluation centers
 - ◆ Centers for physical, speech, and occupational therapy
 - ◆ Sources for funding
 - ◆ Parent support Groups
- ◆ Information on the Catastrophic Illness in Children Relief Fund Program
- ◆ Single entry point and service Coordination for all children, age birth to 3 years, who may need Early Intervention Services.

Most important, your case manager will monitor the services your child is receiving and his or her progress toward reaching the identified goals

