

Where can I get more information?

Rutgers University Mosquito Research and Control Unit
Phone (732) 932-9341

Centers for Disease Control
www.cdc.gov; go to "Health Topics"

Bergen County Department of Health Services
www.bergenhealth.org

Bergen County Mosquito Control Division
Phone (201) 599-6141

Bergen County Office of Emergency Management
www.bcoem.org

Bergen County West Nile Virus Hot Line
Phone (201) 225-7000

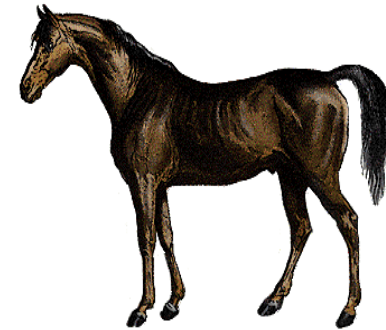
N.J. Department of Agriculture
www.state.nj.us/agriculture

U.S. Department of Agriculture
www.aphis.usda.gov



Minimizing the Risk of West Nile Virus Infection

*For horse owners,
managers and trainers*



**Adapted from
New Jersey Department of Agriculture
May 17, 2000**

**Bergen County Department of Health Services
327 E. Ridgewood Avenue - Paramus, New Jersey 07652-4895 - (201) 599-6100**

M:hedpress/emergenc/westile2001/revnjagdeptwnv 140.404 0401

Bergen County Department of Health Services

327 E. Ridgewood Avenue
Paramus, New Jersey 07652-4895
(201) 599-6100

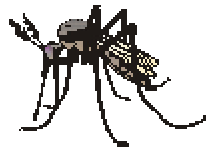
bchealth@carroll.com

Eliminate mosquito breeding habitats

Remove potential water collection sites or maintain in clean condition. Potential sites include:

Water troughs: traditional or automatic	Wheelbarrows
Wash stall drains	Stagnant ponds
Water/feed buckets	Unwashed birdbaths
Clogged gutters and drains	Plastic wading pools
Unused swimming pools	Storm drains
	Discarded tires

- Keep buckets, basins, gutters, drains and pools clean and debris-free.
- Turn over wheelbarrows, wading pools and other water-collecting equipment when not in use.
- Drill holes in the bottom of containers that cannot be discarded and must be left outdoors.
- Clean and maintain swimming pools regularly.
- Use landscaping to eliminate standing water that collects on the property.



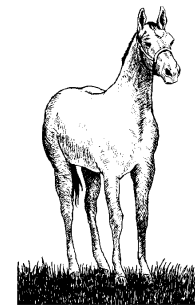
Employ the recommendations above instead of relying on methods which are minimally effective mosquito control measures: e.g., fly sheets and masks, repellents for long-term control, fly misters, and bug zappers.

Consult with the Bergen County Mosquito Control Division

Request a site visit to identify areas of concern, get suggestions for clean-up/treatment, and identify possible sites for mosquito collection and testing.

Contact your veterinarian and request a farm visit if your horse exhibits any of the following clinical signs:

- anorexia (off feed)
- depression or listlessness
- weakness of hind limbs
- flaccid paralysis of the lower lip (droopy lip)
- impaired vision
- ataxia (difficulty moving or standing correctly)
- paresis (paralysis, complete or partial)
- aimless wandering
- convulsions
- inability to swallow
- circling
- hyperexcitability
- head pressing



Immediate intervention may save your horse's life! Don't hesitate; call your vet!